



GAT MONTHLY MEMBERSHIP PROGRESS REPORT

Results as of: 2/28/2023

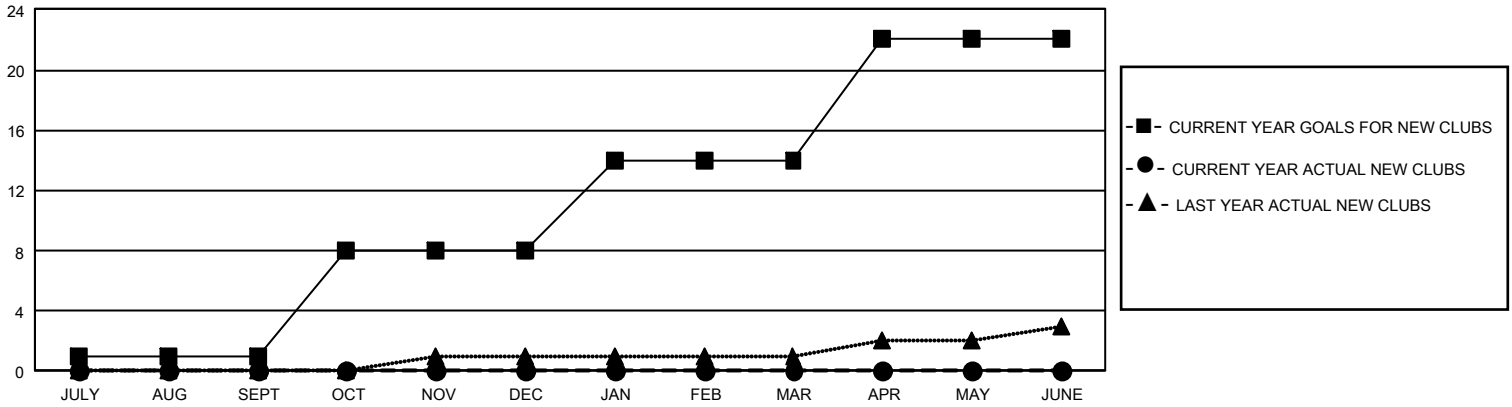
GMT Constitutional Area 1, Group C

REPORT DOES NOT INCLUDE CLUBS IN UNDISTRICTED AREAS.

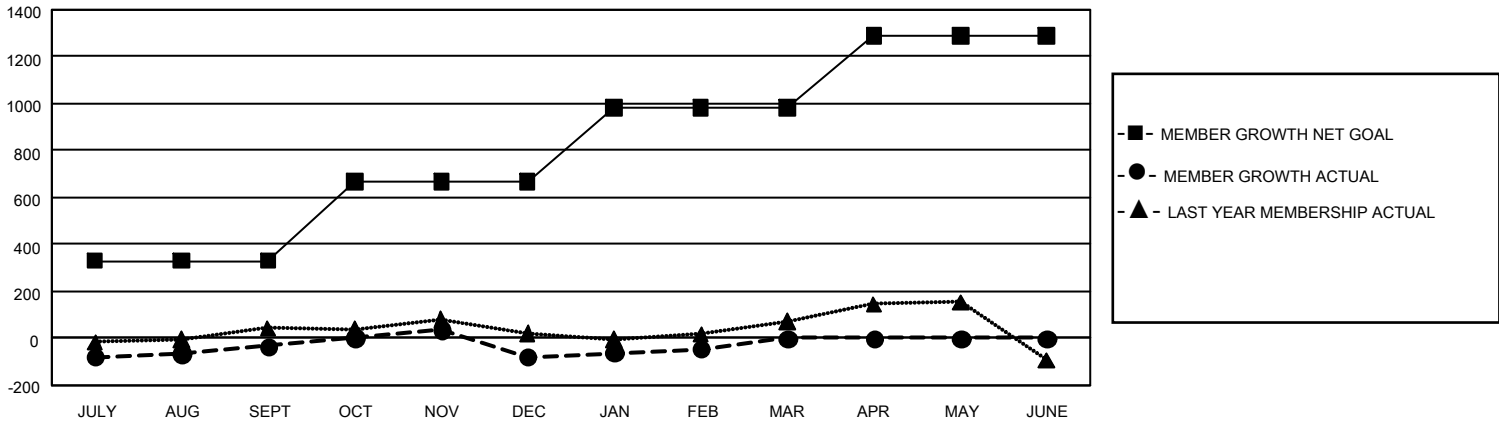
Clubs			
RESULTS FOR 2022-2023			
QUARTER	NEW CLUB GOAL	NEW CLUBS	DROPPED CLUBS
JULY/AUG/SEPT	3	0	4
OCT/NOV/DEC	21	0	0
JAN/FEB/MAR	18	0	1
APR/MAY/JUNE	24	0	0

Members			
RESULTS FOR 2022-2023			
QUARTER	MEMBER GROWTH NET GOAL	MEMBER GROWTH ACTUAL	DROPPED MEMBERS ACTUAL (including transfers)
JULY/AUG/SEPT	330	448	416
OCT/NOV/DEC	338	442	468
JAN/FEB/MAR	313	283	226
APR/MAY/JUNE	308	0	0

GOALS AND ACTUAL NEW CLUBS CUMULATIVE



GOALS AND ACTUAL MEMBERS CUMULATIVE



DROPPED CLUBS: 5	360 CLUBS OF 628 ADDED 1 OR MORE NEW MEMBERS	<u>GENDER DISTRIBUTION</u>	
<u>DROPPED MEMBERS</u>		MALE	13,195 (67.55%)
DECEASED	172	FEMALE	6,330 (32.41%)
CLUB CANCELLED	17	NON BINARY	0 (0.00%)
OTHER	921	PREFER NOT TO ANSWER	8 (0.04%)
TOTAL	1,110	TOTAL FAMILY UNIT MEMBERS	3,931
	CLICK HERE FOR CUMULATIVE MEMBERSHIP DATA	FAMILY MEMBERS PAYING HALF DUES	1,994